

## MEMORANDUM

**DATE:** April 7, 2026

**To:** Kirk Swanner, Associate Engineer, City of Upland

**FROM:** Stan Spencer, Arborist (International Society of Arboriculture [ISA] Certified Arborist/Tree Risk Assessor, WE-9358A), LSA

**SUBJECT:** Summary of March 17, 2026, Arborist Site Walk and Recommendations for Protection of Street Trees for 19th Street Reconstruction Project in Upland, California (LSA Project No. 20262811)

### INTRODUCTION

The 19th Street Reconstruction Project (project) site encompasses the 19<sup>th</sup> Street parkway between Mountain Avenue and Euclid Avenue in Upland, California (Figure 1, attached). Roots of street trees in this area have damaged sidewalks, curbs and gutters, parkway sections, driveway approaches, and adjacent areas of street pavement. The project involves reconstruction of damaged parkway components and other street improvements as well as water, signal and striping, and traffic signal improvements.

On March 17, 2026, LSA Arborist Stan Spencer conducted a project site visit with David White, Vice President of Huitt-Zollars, and Kirk Swanner, Associate Engineer of the City of Upland (City) to assess trees with roots that may be subject to impacts from construction activities associated with the project in accordance with City Municipal Code Sections 12.24.100 (Tree removal – Permit), 12.26.060 (Tree removal and replacement program), and 12.26.080 (Sidewalk and street repair). Dr. Spencer verified the locations and species of trees that may be impacted, made notes on the type of potential impacts, and provided preliminary recommendations to minimize impacts to each tree. This memorandum provides a list of trees in the project area and recommendations for minimization of project-related impacts to the trees.

### APPLICABLE MUNICIPAL CODE

City Municipal Code Section 12.24.100 (Tree removal – Permit) states:

*Final authority for the removal of all trees rests with the city manager. No trees shall be removed from the parkways or parking strips, except on Euclid Avenue, without a required permit to be issued by the city manager. Removal of trees on Euclid Avenue shall be subject to the policy of the city council established by Resolution No. 1452 now in effect or as may be amended. The city may remove any tree if its existence, in the opinion of the city, constitutes a danger or hazardous condition. (Prior code § 7240.10).*

City Municipal Code Section 12.26.060 (Tree removal and replacement program) states:

*The public works director, with the approval of the city manager pursuant to Section 12.24.100 of this code, or the city council's designee and the city's contract certified arborist have the authority to approve tree removal requests only if the tree is dead, diseased, hazardous, or an emergency condition exists which is a threat to public safety. The public works director or the city contractor for street tree care and maintenance shall inform the adjacent homeowners of all live and/or declining trees intended for removal a minimum of three days prior to their removal whenever possible. Those homeowners shall have reasonable time to appeal that decision to the street tree advisory committee.*

*A tree that is determined to be causing chronic and persistent damage to curbs, gutters, sidewalks or other hardscape and/or structures may be removed so improvements to the city's infrastructure can be made.*

*Reasons That Will Not be Considered for Tree Removal. No healthy city tree shall be removed because of leaves, pine cones, pine needles, fruit, or seed debris or any other perceived annoyance. No healthy tree shall be removed because roots from the tree have grown into a compromised sewer lateral. Maintenance of sewers laterals are the responsibility of the property owner.*

City Municipal Code Section 12.26.080 (Sidewalk and Street Repair) states:

*Should the repair of sidewalks, curbs, gutters or streets create a need to prune tree roots to the extent that the tree may be damaged or become unstable, the city manager, or his or her designee, whose decision shall be final, shall give consideration to the following in lieu of action that may damage, destabilize or cause the removal of a tree:*

- A. To not make such improvements;*
- B. To displace the sidewalk laterally away from the tree trunk, either locally for each tree, or uniformly along length of the street if there is enough room in the existing right-of-way;*
- C. To displace the curb and gutter laterally into the paved roadway of the street, either locally, or uniformly along a length of the street, which in some cases may necessitate the prohibiting of street parking of vehicles at all times, provided such displacement does not create traffic hazard, or conditions adverse to proper care, repair and maintenance;*
- D. To repair to eliminate hazard;*
- E. To widen the parkway;*
- F. To relocate the sidewalk or curb;*
- G. To raise the sidewalk.*

## RESULTS AND RECOMMENDATIONS

The City provided geographic information system (GIS) mapping of 200 street trees on and adjacent to the project site. To this, Dr. Spencer added two trees (Trees 201 and 202) that did not appear in the City's GIS data. All 202 trees are shown in Figure 1, identified with numbers assigned by LSA. Table A (attached) provides corresponding tree identification numbers from the City's GIS database, species identifications, and recommendations for minimization of impacts to each tree.

Most of the street trees in the project area are large tree species that have outgrown the restricted rooting space that is available between the sidewalks and curbs. This mismatch of tree species and available rooting space is the ultimate cause of the damage to sidewalks, curbs and gutters, and other parkway elements in need of repair. These trees will continue to grow and are likely to cause additional damage to parkway infrastructure even after repairs are made. Municipal Code Section 12.26.060 states that a tree may be removed so improvements to the City's infrastructure can be made if the tree is determined to be causing chronic and persistent damage to curbs, gutters, sidewalks or other hardscape and/or structures.

Tree species on the site that have caused infrastructure damage include southern live oak (*Quercus virginensis*), coast live oak (*Quercus agrifolia*), American sweetgum (*Liquidambar styraciflua*), carrotwood (*Cupaniopsis anacardioides*), incense cedar (*Calocedrus decurrens*), and Chinese fringe tree (*Chionanthus retusus*). The only way to entirely prevent conflicts between roots and infrastructure would be to remove the tree species that are causing the damage and replace them with species more suitable to the built environment. However, these mature trees do provide useful functions for the community, and some could be kept with implementation of measures to avoid or minimize harm to the trees.

The damage to sidewalks and curbs requiring repair was caused by large roots lifting these structures. These roots, given their size, are likely to be critical to the health and, in many cases, to the stability of the trees. Municipal Code Section 12.26.080 states that, if the repair of sidewalks, curbs, or other infrastructure would create a need to prune critical roots, consideration should be given to alternative actions (such as raising or displacing a sidewalk) to prevent damage to the health or stability of a tree or need for its removal. Such alternatives were considered for each tree. These alternatives, where feasible, are indicated in Table A. Otherwise, tree removal and replacement with a more suitable species is indicated. The trees were divided into 5 groups (A through D) as shown in Figure 1 and indicated in Table A.

**Group A.** With the modifications recommended in Table A and using best practices, no root pruning of these trees should be required. However, these trees should be monitored annually after work is complete for 5 years to check for signs of decline. If substantial decline is observed, removal should be considered. If the recommended repair modifications to avoid root pruning cannot be made, the tree should be moved to Group B. It should also be noted that, as long as these trees remain, their roots will continue to grow and may cause additional damage to sidewalks or other infrastructure even after repairs with the recommended modifications are made. The City may choose to remove these trees and replace them with species more suitable to the built environment to avoid the possible need for future repairs.

**Group B.** Repairs near these trees would require pruning of roots that are likely critical to the health or stability of the trees, and removal/replacement of the trees is recommended to avoid increased risk of tree failure or death. Alternatively, additional analysis could be conducted on each tree to determine if it could be saved and then closely monitored. Such analysis would include an evaluation of tree health and condition, measurement of trunk caliper, and determination of distance of work from the tree trunk. If the tree is in good health with no substantial lean and repairs would not require root pruning within a distance from the trunk equal to 6 times the trunk caliper, the tree may be saved with implementation of the following measures:

1. Any required pruning of roots greater than 1 inch in diameter must be done using proper techniques for a clean, right-angle cut that preserves the root bark intact.
2. Mulch shall be placed around the base of the tree, and supplemental water shall be provided as needed during the dry season.
3. The tree shall be monitored for 5 years to check for signs of decline in health or of increased lean or any root plate lifting. If there are signs of decline, increased lean, or root plate lifting, the tree should be removed and replaced with a species more suitable to the built environment.

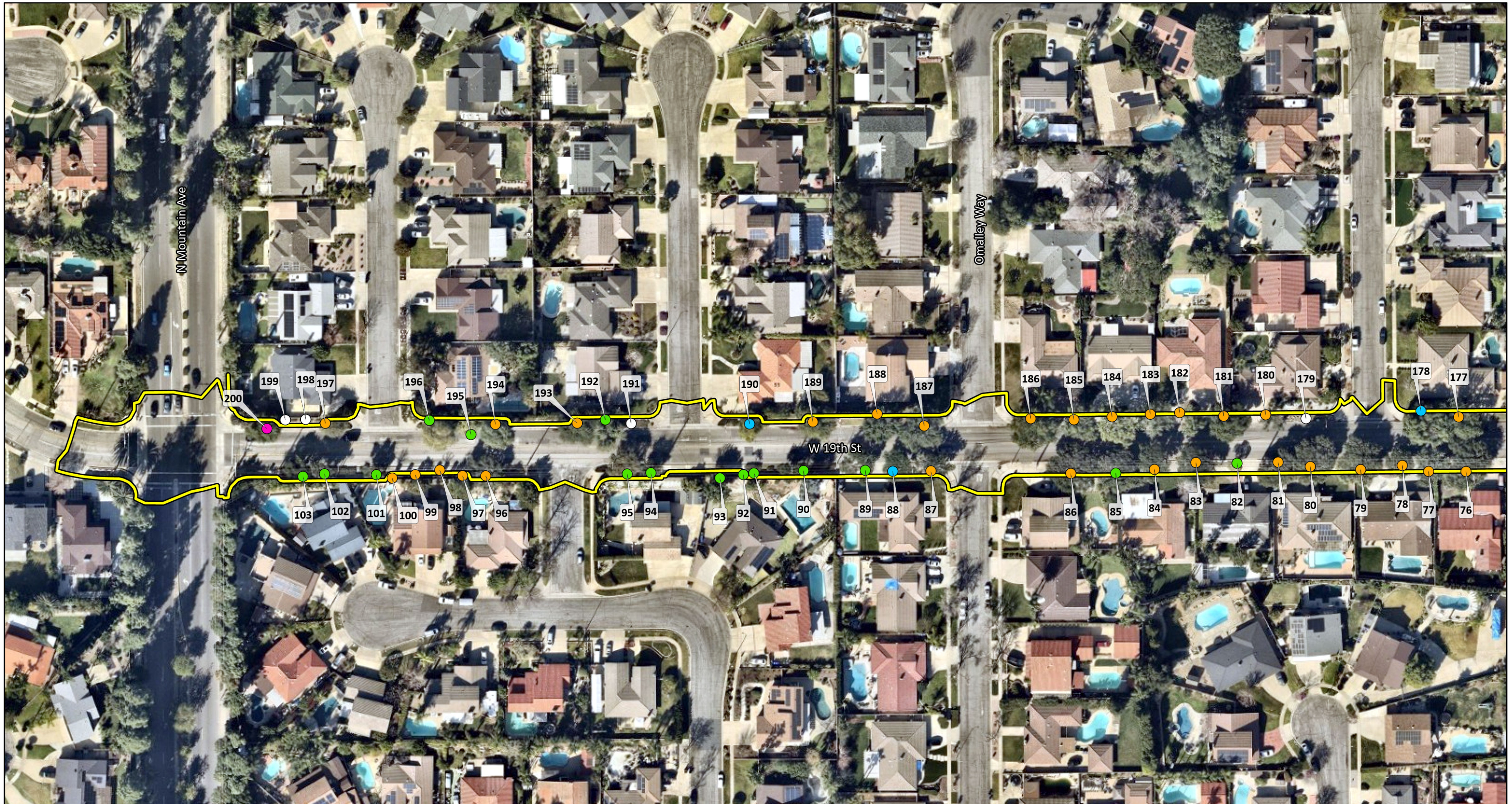
**Group C.** These trees will be removed for other reasons. Tree 200 will be removed for sight, and Tree 149 will be removed because it extends into the street.

**Group D.** No tree is present even though tree numbers are assigned to these locations in the City's GIS dataset.

**Group E.** There are no needed repairs that are close enough to these trees to require pruning of critical roots.

Although the analysis, opinions, and conclusions stated herein are based on commonly accepted arboricultural practices, trees are living organisms that may fail for reasons we do not fully understand. Certain conditions are often hidden within trees or below the ground. Arborists cannot guarantee that a tree will be healthy or safe under any circumstances or for any given period of time. Likewise, remedial treatments cannot be guaranteed. The only way to remove all risk of tree failure is to remove all trees.

Attachment: Figure 1: Trees  
Table A: Tree Summary and Recommendations



LSA

Project Footprint

Tree Classification

- Group A: Repair Modifications Recommended to Avoid Root Pruning
- Group B: Repairs Would Require Root Pruning
- Group C: Tree to be Removed for Other Reasons
- Group D: Mapped Tree is Missing
- Group E: No Repairs Needed



0 50 100  
FEET

SOURCE: Nearmap (1/28/2026)

I:\2026\20262811\GIS\Pro\19th Street Reconstruction\19th Street Reconstruction.aprx (Fig 1 - Trees)  
4/6/2026 6:08 PM

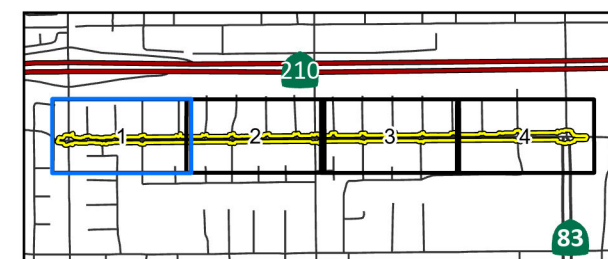
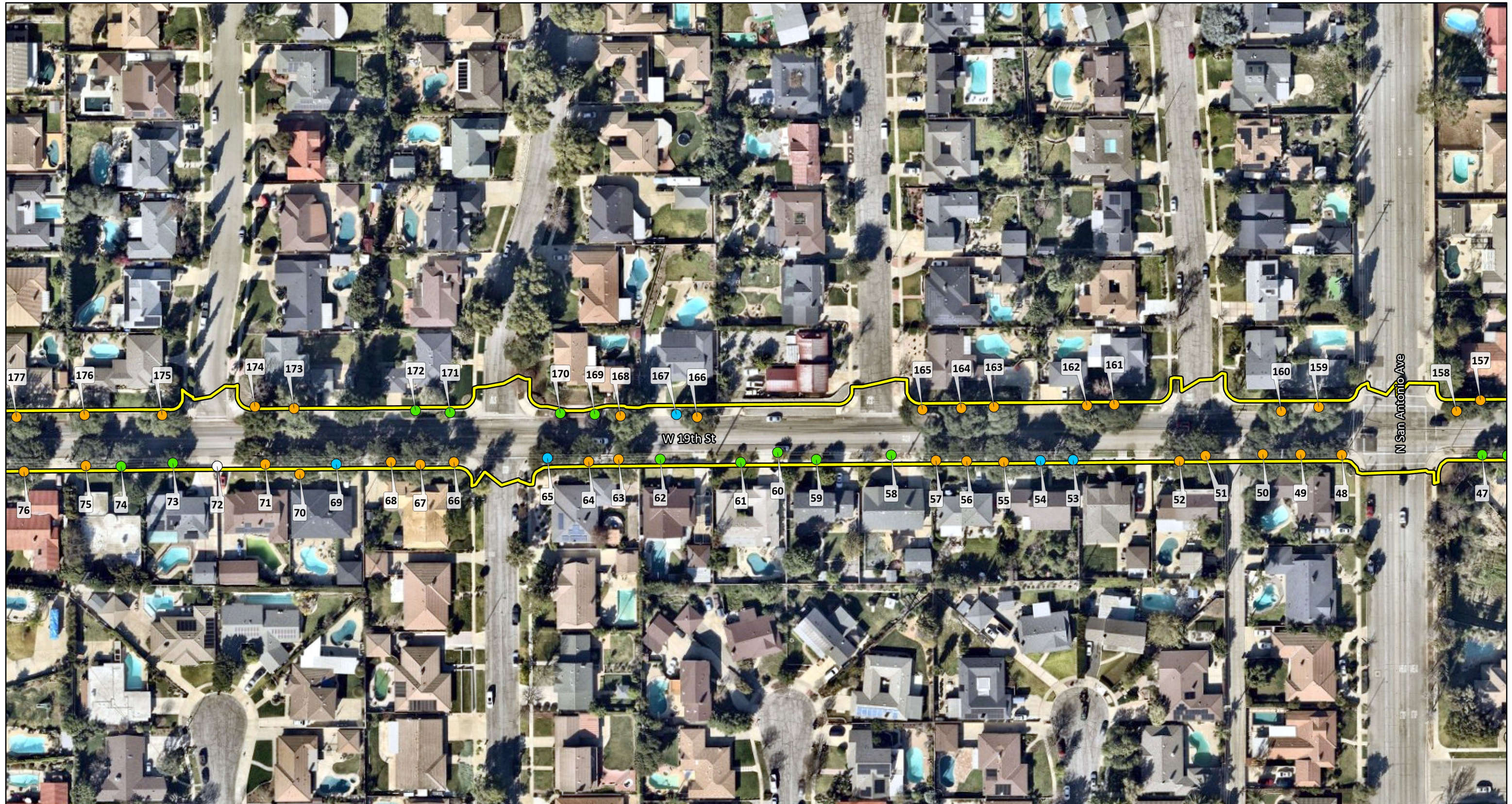


FIGURE 1  
Sheet 1 of 4

19th Street Reconstruction  
Trees



LSA

Project Footprint

Tree Classification

- Group A: Repair Modifications Recommended to Avoid Root Pruning
- Group B: Repairs Would Require Root Pruning
- Group C: Tree to be Removed for Other Reasons
- Group D: Mapped Tree is Missing
- Group E: No Repairs Needed



0 50 100  
FEET

SOURCE: Nearmap (1/28/2026)

I:\2026\20262811\GIS\Pro\19th Street Reconstruction\19th Street Reconstruction.aprx (Fig 1 - Trees)  
4/6/2026 6:08 PM

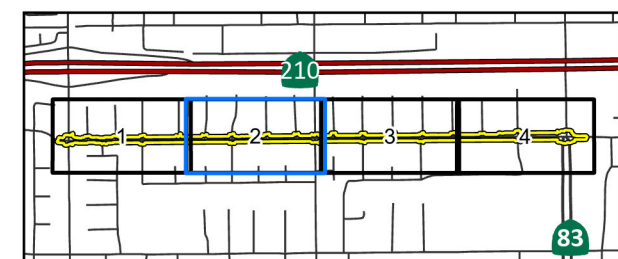
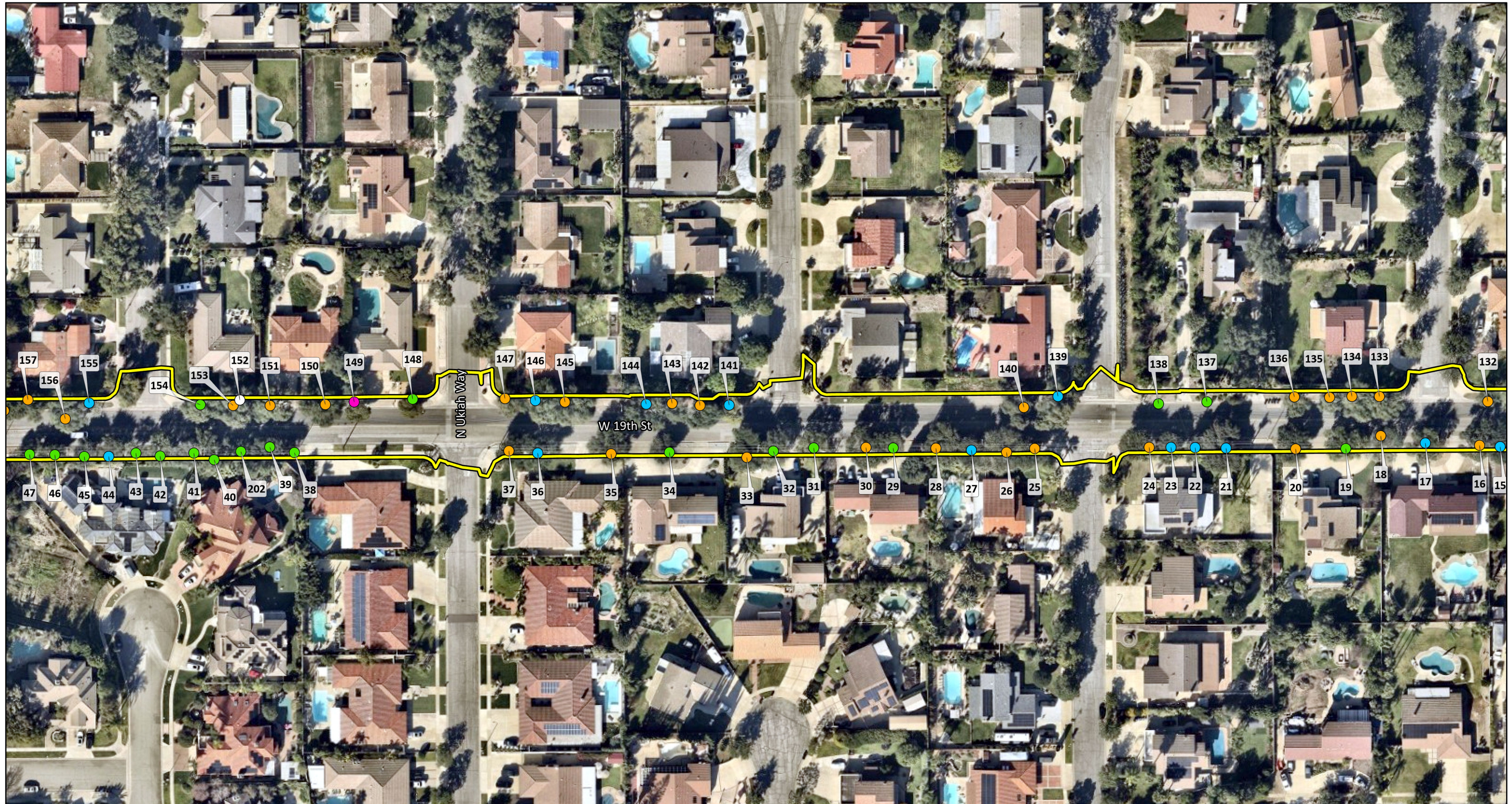


FIGURE 1  
Sheet 2 of 4

19th Street Reconstruction  
Trees



LSA

Project Footprint

Tree Classification

- Group A: Repair Modifications Recommended to Avoid Root Pruning
- Group B: Repairs Would Require Root Pruning
- Group C: Tree to be Removed for Other Reasons
- Group D: Mapped Tree is Missing
- Group E: No Repairs Needed



0 50 100  
FEET

SOURCE: Nearmap (1/28/2026)

I:\2026\20262811\GIS\Pro\19th Street Reconstruction\19th Street Reconstruction.aprx (Fig 1 - Trees)  
4/6/2026 6:08 PM

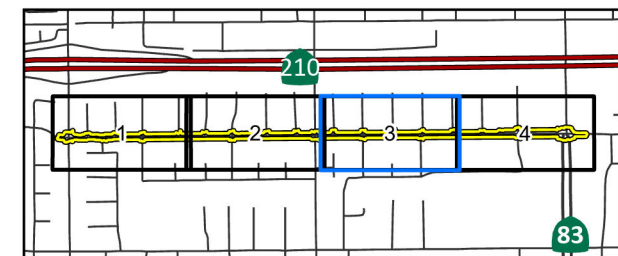
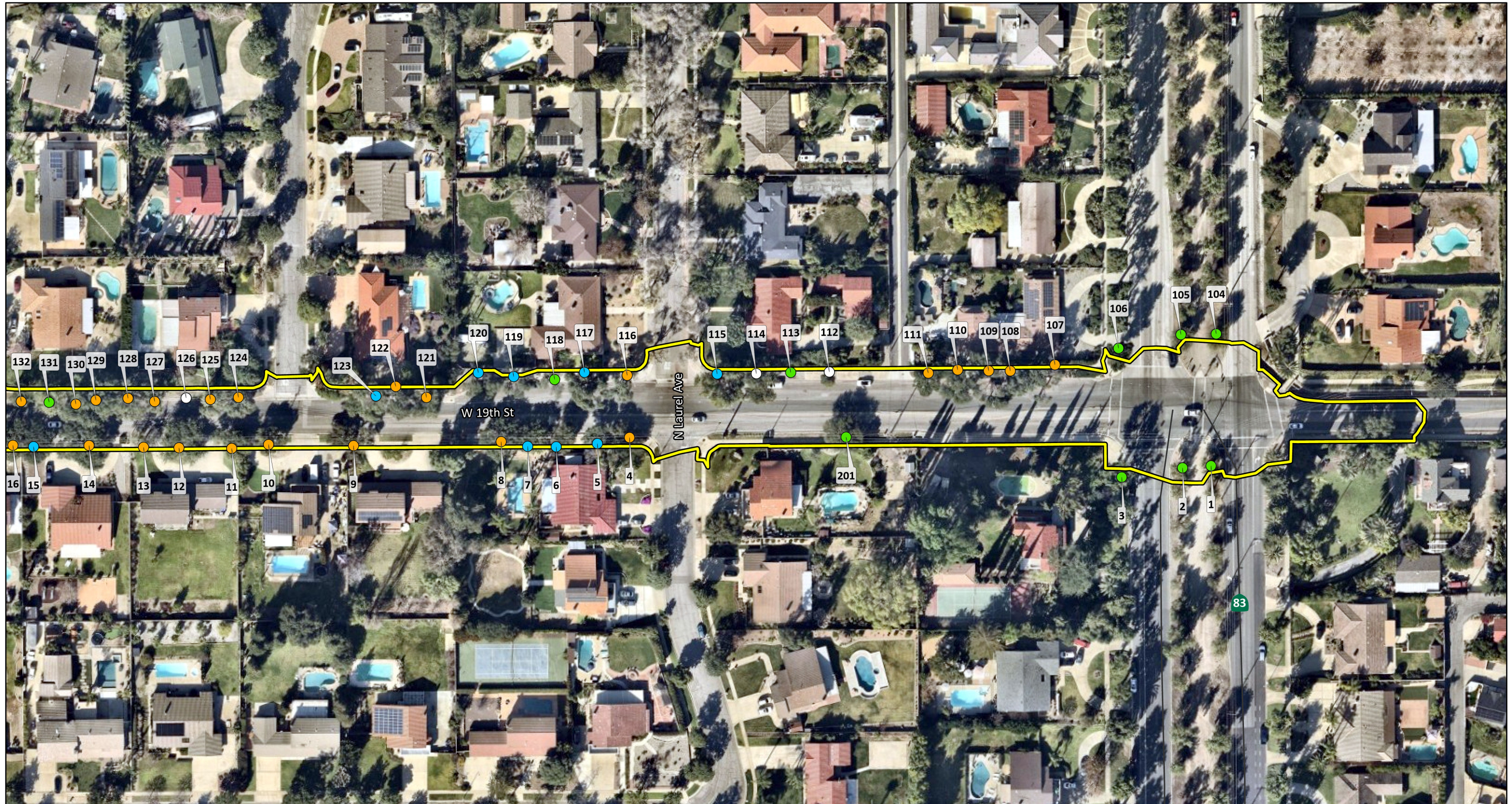


FIGURE 1  
Sheet 3 of 4

19th Street Reconstruction  
Trees



LSA

Project Footprint

Tree Classification

- Group A: Repair Modifications Recommended to Avoid Root Pruning
- Group B: Repairs Would Require Root Pruning
- Group C: Tree to be Removed for Other Reasons
- Group D: Mapped Tree is Missing
- Group E: No Repairs Needed



0 50 100  
FEET

SOURCE: Nearmap (1/28/2026)

I:\2026\20262811\GIS\Pro\19th Street Reconstruction\19th Street Reconstruction.aprx (Fig 1 - Trees)  
4/6/2026 6:08 PM

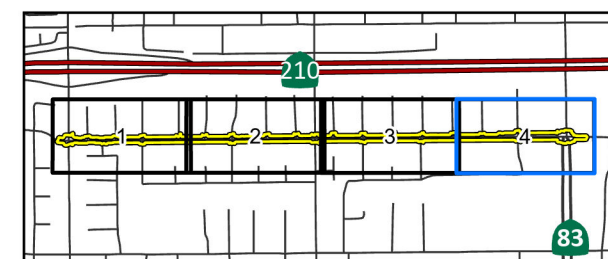


FIGURE 1  
Sheet 4 of 4

19th Street Reconstruction  
Trees

**Table A. Tree Summary and Recommendations**

LSA Tree Number	City's Tree Number	Common Name	Scientific Name	Observation	Group	Recommendation
1	25837	Peruvian pepper tree	<i>Schinus molle</i>	No repairs needed	E	N/A
2	25735	Peruvian pepper tree	<i>Schinus molle</i>	No repairs needed	E	N/A
3	25910	Silk oak	<i>Grevillea robusta</i>	No repairs needed	E	N/A
4	10294	Southern live oak	<i>Quercus virginiana</i>	Curb lifted	B	Tree removal/replacement tree or additional analysis/monitoring
5	10295	Southern live oak	<i>Quercus virginiana</i>	Parkway section lifted	A	Remove parkway section
6	36332	Southern live oak	<i>Quercus virginiana</i>	Parkway section lifted	A	Remove parkway section
7	36333	Southern live oak	<i>Quercus virginiana</i>	Sidewalk lifted	A	Ramp sidewalk above roots
8	36334	Southern live oak	<i>Quercus virginiana</i>	Curb and sidewalk lifted	B	Tree removal/replacement tree or additional analysis/monitoring
9	39026	Coast live oak	<i>Quercus agrifolia</i>	Curb and sidewalk lifted	B	Tree removal/replacement tree or additional analysis/monitoring
10	8509	Southern live oak	<i>Quercus virginiana</i>	Sidewalk lifted	B	Tree removal/replacement tree or additional analysis/monitoring
11	16964	Southern live oak	<i>Quercus virginiana</i>	Curb and sidewalk lifted	B	Tree removal/replacement tree or additional analysis/monitoring
12	16965	Southern live oak	<i>Quercus virginiana</i>	Curb lifted	B	Tree removal/replacement tree or additional analysis/monitoring
13	16966	Southern live oak	<i>Quercus virginiana</i>	Sidewalk lifted	B	Tree removal/replacement tree or additional analysis/monitoring
14	8510	Southern live oak	<i>Quercus virginiana</i>	Sidewalk lifted	B	Tree removal/replacement tree or additional analysis/monitoring
15	8511	Southern live oak	<i>Quercus virginiana</i>	Sidewalk lifted	A	Ramp sidewalk above roots
16	8512	Southern live oak	<i>Quercus virginiana</i>	Sidewalk lifted	B	Tree removal/replacement tree or additional analysis/monitoring
17	8513	Southern live oak	<i>Quercus virginiana</i>	Sidewalk lifted	A	Ramp sidewalk above roots
18	33096	Coast live oak	<i>Quercus agrifolia</i>	Sidewalk lifted	B	Tree removal/replacement tree or additional analysis/monitoring
19	16967	Southern live oak	<i>Quercus virginiana</i>	No repairs needed	E	N/A
20	16968	Southern live oak	<i>Quercus virginiana</i>	Curb and sidewalk lifted	B	Tree removal/replacement tree or additional analysis/monitoring
21	36348	Southern live oak	<i>Quercus virginiana</i>	Sidewalk lifted	A	Ramp sidewalk above roots
22	36349	Southern live oak	<i>Quercus virginiana</i>	Sidewalk lifted	A	Ramp sidewalk above roots

**Table A. Tree Summary and Recommendations**

LSA Tree Number	City's Tree Number	Common Name	Scientific Name	Observation	Group	Recommendation
23	36350	Southern live oak	<i>Quercus virginiana</i>	Sidewalk lifted	A	Ramp sidewalk above roots
24	36351	Southern live oak	<i>Quercus virginiana</i>	Curb lifted	B	Tree removal/replacement tree or additional analysis/monitoring
25	36355	Southern live oak	<i>Quercus virginiana</i>	Curb lifted	B	Tree removal/replacement tree or additional analysis/monitoring
26	10304	Southern live oak	<i>Quercus virginiana</i>	Curb lifted	B	Tree removal/replacement tree or additional analysis/monitoring
27	36356	Southern live oak	<i>Quercus virginiana</i>	Sidewalk lifted	A	Ramp sidewalk above roots
28	8514	Southern live oak	<i>Quercus virginiana</i>	Curb lifted	B	Tree removal/replacement tree or additional analysis/monitoring
29	8515	Southern live oak	<i>Quercus virginiana</i>	No repairs needed	E	N/A
30	37035	Southern live oak	<i>Quercus virginiana</i>	Curb lifted	B	Tree removal/replacement tree or additional analysis/monitoring
31	16971	Southern live oak	<i>Quercus virginiana</i>	No repairs needed	E	N/A
32	8516	Southern live oak	<i>Quercus virginiana</i>	No repairs needed	E	N/A
33	8517	Southern live oak	<i>Quercus virginiana</i>	Curb, sidewalk, and driveway approach lifted	B	Tree removal/replacement tree or additional analysis/monitoring
34	39028	Southern live oak	<i>Quercus virginiana</i>	No repairs needed	E	N/A
35	10307	Southern live oak	<i>Quercus virginiana</i>	Curb and sidewalk lifted	B	Tree removal/replacement tree or additional analysis/monitoring
36	10308	Southern live oak	<i>Quercus virginiana</i>	Sidewalk lifted	A	Ramp sidewalk above roots
37	39030	Southern live oak	<i>Quercus virginiana</i>	Curb and sidewalk lifted	B	Tree removal/replacement tree or additional analysis/monitoring
38	39032	Coast live oak	<i>Quercus agrifolia</i>	No repairs needed	E	N/A
39	39033	Coast live oak	<i>Quercus agrifolia</i>	No repairs needed	E	N/A
40	39035	Coast live oak	<i>Quercus agrifolia</i>	No repairs needed	E	N/A
41	39036	Coast live oak	<i>Quercus agrifolia</i>	No repairs needed	E	N/A
42	39037	Coast live oak	<i>Quercus agrifolia</i>	No repairs needed	E	N/A
43	39038	Coast live oak	<i>Quercus agrifolia</i>	No repairs needed	E	N/A
44	39039	Coast live oak	<i>Quercus agrifolia</i>	Sidewalk lifted	A	Ramp sidewalk above roots
45	39040	Coast live oak	<i>Quercus agrifolia</i>	No repairs needed	E	N/A
46	39041	Coast live oak	<i>Quercus agrifolia</i>	No repairs needed	E	N/A
47	39042	Coast live oak	<i>Quercus agrifolia</i>	No repairs needed	E	N/A

**Table A. Tree Summary and Recommendations**

LSA Tree Number	City's Tree Number	Common Name	Scientific Name	Observation	Group	Recommendation
48	10311	Southern live oak	<i>Quercus virginiana</i>	Curb and sidewalk lifted	B	Tree removal/replacement tree or additional analysis/monitoring
49	10312	Southern live oak	<i>Quercus virginiana</i>	Curb and sidewalk lifted	B	Tree removal/replacement tree or additional analysis/monitoring
50	10313	Southern live oak	<i>Quercus virginiana</i>	Curb and sidewalk lifted	B	Tree removal/replacement tree or additional analysis/monitoring
51	8520	Southern live oak	<i>Quercus virginiana</i>	Curb and sidewalk lifted	B	Tree removal/replacement tree or additional analysis/monitoring
52	8521	Southern live oak	<i>Quercus virginiana</i>	Curb and sidewalk lifted	B	Tree removal/replacement tree or additional analysis/monitoring
53	8523	Southern live oak	<i>Quercus virginiana</i>	Sidewalk lifted	A	Ramp sidewalk above roots
54	16976	Southern live oak	<i>Quercus virginiana</i>	Sidewalk lifted	A	Ramp sidewalk above roots
55	16977	Southern live oak	<i>Quercus virginiana</i>	Curb lifted	B	Tree removal/replacement tree or additional analysis/monitoring
56	8524	Southern live oak	<i>Quercus virginiana</i>	Curb lifted	B	Tree removal/replacement tree or additional analysis/monitoring
57	16978	Southern live oak	<i>Quercus virginiana</i>	Curb and driveway approach lifted	B	Tree removal/replacement tree or additional analysis/monitoring
58	8525	Gold medallion tree	<i>Cassia leptophylla</i>	No repairs needed	E	N/A
59	16979	Gold medallion tree	<i>Cassia leptophylla</i>	No repairs needed	E	N/A
60	16980	Gold medallion tree	<i>Cassia leptophylla</i>	No repairs needed	E	N/A
61	16981	Gold medallion tree	<i>Cassia leptophylla</i>	No repairs needed	E	N/A
62	16982	Chinese pistache	<i>Pistacia chinensis</i>	No repairs needed	E	N/A
63	10321	Southern live oak	<i>Quercus virginiana</i>	Curb and sidewalk lifted	B	Tree removal/replacement tree or additional analysis/monitoring
64	10322	Southern live oak	<i>Quercus virginiana</i>	Curb and sidewalk lifted	B	Tree removal/replacement tree or additional analysis/monitoring
65	10323	Southern live oak	<i>Quercus virginiana</i>	Sidewalk lifted	A	Ramp sidewalk above roots
66	36376	Southern live oak	<i>Quercus virginiana</i>	Curb and sidewalk lifted	B	Tree removal/replacement tree or additional analysis/monitoring
67	10324	Southern live oak	<i>Quercus virginiana</i>	Curb and sidewalk lifted	B	Tree removal/replacement tree or additional analysis/monitoring

**Table A. Tree Summary and Recommendations**

LSA Tree Number	City's Tree Number	Common Name	Scientific Name	Observation	Group	Recommendation
68	10325	Southern live oak	<i>Quercus virginiana</i>	Sidewalk lifted	B	Tree removal/replacement tree or additional analysis/monitoring
69	8530	Southern live oak	<i>Quercus virginiana</i>	Sidewalk lifted	A	Ramp sidewalk above roots
70	8531	Southern live oak	<i>Quercus virginiana</i>	Curb and sidewalk lifted	B	Tree removal/replacement tree or additional analysis/monitoring
71	16983	Southern live oak	<i>Quercus virginiana</i>	Curb and sidewalk lifted	B	Tree removal/replacement tree or additional analysis/monitoring
72	33100	Coast live oak	<i>Quercus agrifolia</i>	No tree present	D	N/A
73	16984	Holly oak	<i>Quercus ilex</i>	No repairs needed	E	N/A
74	8532	Southern live oak	<i>Quercus virginiana</i>	No repairs needed	E	N/A
75	8533	Southern live oak	<i>Quercus virginiana</i>	Curb and sidewalk lifted	B	Tree removal/replacement tree or additional analysis/monitoring
76	8534	Southern live oak	<i>Quercus virginiana</i>	Curb and sidewalk lifted	B	Tree removal/replacement tree or additional analysis/monitoring
77	8535	Southern live oak	<i>Quercus virginiana</i>	Curb and sidewalk lifted	B	Tree removal/replacement tree or additional analysis/monitoring
78	8536	Southern live oak	<i>Quercus virginiana</i>	Curb and sidewalk lifted	B	Tree removal/replacement tree or additional analysis/monitoring
79	8537	Southern live oak	<i>Quercus virginiana</i>	Curb and sidewalk lifted	B	Tree removal/replacement tree or additional analysis/monitoring
80	8538	Southern live oak	<i>Quercus virginiana</i>	Sidewalk lifted	B	Tree removal/replacement tree or additional analysis/monitoring
81	16985	Southern live oak	<i>Quercus virginiana</i>	Sidewalk lifted	B	Tree removal/replacement tree or additional analysis/monitoring
82	8542	Camphor tree	<i>Cinnamomum camphora</i>	No repairs needed	E	N/A
83	16986	Southern live oak	<i>Quercus virginiana</i>	Curb lifted	B	Tree removal/replacement tree or additional analysis/monitoring
84	16987	Southern live oak	<i>Quercus virginiana</i>	Sidewalk and driveway approach lifted	B	Tree removal/replacement tree or additional analysis/monitoring
85	39045	Southern live oak	<i>Quercus virginiana</i>	No repairs needed	E	N/A
86	39046	Southern live oak	<i>Quercus virginiana</i>	Curb lifted	B	Tree removal/replacement tree or additional analysis/monitoring

**Table A. Tree Summary and Recommendations**

LSA Tree Number	City's Tree Number	Common Name	Scientific Name	Observation	Group	Recommendation
87	39047	Southern live oak	<i>Quercus virginiana</i>	Sidewalk lifted	B	Tree removal/replacement tree or additional analysis/monitoring
88	39048	Southern live oak	<i>Quercus virginiana</i>	Sidewalk lifted	A	Ramp sidewalk above roots
89	39049	Southern live oak	<i>Quercus virginiana</i>	No repairs needed	E	N/A
90	39051	Coast live oak	<i>Quercus agrifolia</i>	No repairs needed	E	N/A
91	25561	Holly oak	<i>Quercus ilex</i>	No repairs needed	E	N/A
92	25562	Sweetgum	<i>Liquidambar styraciflua</i>	No repairs needed	E	N/A
93	25563	Sweetgum	<i>Liquidambar styraciflua</i>	No repairs needed	E	N/A
94	39054	Coast live oak	<i>Quercus agrifolia</i>	No repairs needed	E	N/A
95	39055	Coast live oak	<i>Quercus agrifolia</i>	No repairs needed	E	N/A
96	39057	Coast live oak	<i>Quercus agrifolia</i>	Sidewalk lifted	B	Tree removal/replacement tree or additional analysis/monitoring
97	25564	Sweetgum	<i>Liquidambar styraciflua</i>	Sidewalk lifted	B	Tree removal/replacement tree or additional analysis/monitoring
98	25565	Sweetgum	<i>Liquidambar styraciflua</i>	Sidewalk lifted	B	Tree removal/replacement tree or additional analysis/monitoring
99	25566	Sweetgum	<i>Liquidambar styraciflua</i>	Sidewalk lifted	B	Tree removal/replacement tree or additional analysis/monitoring
100	25567	Sweetgum	<i>Liquidambar styraciflua</i>	Sidewalk lifted	B	Tree removal/replacement tree or additional analysis/monitoring
101	39058	Coast live oak	<i>Quercus agrifolia</i>	No repairs needed	E	N/A
102	25568	Holly oak	<i>Quercus ilex</i>	No repairs needed	E	N/A
103	39059	Coast live oak	<i>Quercus agrifolia</i>	No repairs needed	E	N/A
104	23320	Peruvian pepper tree	<i>Schinus molle</i>	No repairs needed	E	N/A
105	23316	Peruvian pepper tree	<i>Schinus molle</i>	No repairs needed	E	N/A
106	19779	Silk oak	<i>Grevillea robusta</i>	No repairs needed	E	N/A
107	10285	Southern live oak	<i>Quercus virginiana</i>	Curb and sidewalk lifted	B	Tree removal/replacement tree or additional analysis/monitoring
108	10286	Southern live oak	<i>Quercus virginiana</i>	Curb and sidewalk lifted	B	Tree removal/replacement tree or additional analysis/monitoring

**Table A. Tree Summary and Recommendations**

LSA Tree Number	City's Tree Number	Common Name	Scientific Name	Observation	Group	Recommendation
109	10287	Southern live oak	<i>Quercus virginiana</i>	Curb and sidewalk lifted	B	Tree removal/replacement tree or additional analysis/monitoring
110	10288	Southern live oak	<i>Quercus virginiana</i>	Curb lifted	B	Tree removal/replacement tree or additional analysis/monitoring
111	10289	Southern live oak	<i>Quercus virginiana</i>	Sidewalk lifted	B	Tree removal/replacement tree or additional analysis/monitoring
112	36331	Southern live oak	<i>Quercus virginiana</i>	No tree present	D	N/A
113	10291	Southern live oak	<i>Quercus virginiana</i>	No repairs needed	E	N/A
114	10292	Southern live oak	<i>Quercus virginiana</i>	No tree present	D	N/A
115	10293	Southern live oak	<i>Quercus virginiana</i>	Sidewalk lifted	A	Ramp sidewalk above roots
116	10296	Southern live oak	<i>Quercus virginiana</i>	Sidewalk lifted	B	Tree removal/replacement tree or additional analysis/monitoring
117	10297	Southern live oak	<i>Quercus virginiana</i>	Sidewalk lifted	A	Ramp sidewalk above roots
118	10298	Southern live oak	<i>Quercus virginiana</i>	No repairs needed	E	N/A
119	36335	Southern live oak	<i>Quercus virginiana</i>	Sidewalk lifted	A	Ramp sidewalk above roots
120	36336	Southern live oak	<i>Quercus virginiana</i>	Sidewalk lifted	A	Ramp sidewalk above roots
121	36337	Southern live oak	<i>Quercus virginiana</i>	Curb lifted	B	Tree removal/replacement tree or additional analysis/monitoring
122	10299	Southern live oak	<i>Quercus virginiana</i>	Sidewalk lifted	B	Tree removal/replacement tree or additional analysis/monitoring
123	10300	Southern live oak	<i>Quercus virginiana</i>	Sidewalk lifted	A	Ramp sidewalk above roots
124	36338	Southern live oak	<i>Quercus virginiana</i>	Curb lifted	B	Tree removal/replacement tree or additional analysis/monitoring
125	36339	Southern live oak	<i>Quercus virginiana</i>	Curb lifted	B	Tree removal/replacement tree or additional analysis/monitoring
126	10301	Southern live oak	<i>Quercus virginiana</i>	No tree present	D	N/A
127	36340	Southern live oak	<i>Quercus virginiana</i>	Sidewalk lifted	B	Tree removal/replacement tree or additional analysis/monitoring
128	36341	Southern live oak	<i>Quercus virginiana</i>	Sidewalk lifted	B	Tree removal/replacement tree or additional analysis/monitoring
129	36342	Southern live oak	<i>Quercus virginiana</i>	Sidewalk lifted	B	Tree removal/replacement tree or additional analysis/monitoring

**Table A. Tree Summary and Recommendations**

LSA Tree Number	City's Tree Number	Common Name	Scientific Name	Observation	Group	Recommendation
130	36343	Southern live oak	<i>Quercus virginiana</i>	Sidewalk lifted	B	Tree removal/replacement tree or additional analysis/monitoring
131	36344	Southern live oak	<i>Quercus virginiana</i>	No repairs needed	E	N/A
132	36345	Southern live oak	<i>Quercus virginiana</i>	Curb and sidewalk lifted	B	Tree removal/replacement tree or additional analysis/monitoring
133	10302	Southern live oak	<i>Quercus virginiana</i>	Curb and sidewalk lifted	B	Tree removal/replacement tree or additional analysis/monitoring
134	36346	Southern live oak	<i>Quercus virginiana</i>	Sidewalk lifted	B	Tree removal/replacement tree or additional analysis/monitoring
135	10303	Southern live oak	<i>Quercus virginiana</i>	Curb lifted	B	Tree removal/replacement tree or additional analysis/monitoring
136	36347	Southern live oak	<i>Quercus virginiana</i>	Curb lifted	B	Tree removal/replacement tree or additional analysis/monitoring
137	16969	Southern live oak	<i>Quercus virginiana</i>	No repairs needed	E	N/A
138	16970	Southern live oak	<i>Quercus virginiana</i>	No repairs needed	E	N/A
139	36352	Southern live oak	<i>Quercus virginiana</i>	Sidewalk depressed	A	Reduce sidewalk width
140	36353	Southern live oak	<i>Quercus virginiana</i>	Curb lifted	B	Tree removal/replacement tree or additional analysis/monitoring
141	22446	Camphor tree	<i>Cupaniopsis anacardioides</i>	Sidewalk lifted	A	Ramp sidewalk above roots
142	36360	Southern live oak	<i>Quercus virginiana</i>	Sidewalk lifted	B	Tree removal/replacement tree or additional analysis/monitoring
143	10305	Southern live oak	<i>Quercus virginiana</i>	Curb lifted	B	Tree removal/replacement tree or additional analysis/monitoring
144	10306	Southern live oak	<i>Quercus virginiana</i>	Sidewalk lifted	A	Ramp sidewalk above roots
145	36362	Southern live oak	<i>Quercus virginiana</i>	Curb and sidewalk lifted	B	Tree removal/replacement tree or additional analysis/monitoring
146	10309	Southern live oak	<i>Quercus virginiana</i>	Sidewalk lifted	A	Ramp sidewalk above roots
147	10310	Southern live oak	<i>Quercus virginiana</i>	Curb lifted	B	Tree removal/replacement tree or additional analysis/monitoring
148	16972	Brazilian pepper tree	<i>Schinus terebinthifolia</i>	No repairs needed	E	N/A
149	25555	Brazilian pepper tree	<i>Schinus terebinthifolia</i>	Tree to be removed for traffic conflict	C	N/A

**Table A. Tree Summary and Recommendations**

LSA Tree Number	City's Tree Number	Common Name	Scientific Name	Observation	Group	Recommendation
150	16973	Southern live oak	<i>Quercus virginiana</i>	Curb and sidewalk lifted	B	Tree removal/replacement tree or additional analysis/monitoring
151	16974	Southern live oak	<i>Quercus virginiana</i>	Curb and sidewalk lifted	B	Tree removal/replacement tree or additional analysis/monitoring
152	39034	Coast live oak	<i>Quercus agrifolia</i>	No tree present	D	N/A
153	8519	Southern live oak	<i>Quercus virginiana</i>	Curb lifted	B	Tree removal/replacement tree or additional analysis/monitoring
154	16975	Southern live oak	<i>Quercus virginiana</i>	No repairs needed	E	N/A
155	36366	Southern live oak	<i>Quercus virginiana</i>	Sidewalk lifted	A	Ramp sidewalk above roots
156	36367	Southern live oak	<i>Quercus virginiana</i>	Curb and sidewalk lifted	B	Tree removal/replacement tree or additional analysis/monitoring
157	36368	Southern live oak	<i>Quercus virginiana</i>	Curb and sidewalk lifted	B	Tree removal/replacement tree or additional analysis/monitoring
158	36369	Southern live oak	<i>Quercus virginiana</i>	Curb and sidewalk lifted	B	Tree removal/replacement tree or additional analysis/monitoring
159	10314	Southern live oak	<i>Quercus virginiana</i>	Curb lifted	B	Tree removal/replacement tree or additional analysis/monitoring
160	10315	Southern live oak	<i>Quercus virginiana</i>	Curb and sidewalk lifted	B	Tree removal/replacement tree or additional analysis/monitoring
161	36371	Southern live oak	<i>Quercus virginiana</i>	Curb lifted	B	Tree removal/replacement tree or additional analysis/monitoring
162	36372	Southern live oak	<i>Quercus virginiana</i>	Curb lifted	B	Tree removal/replacement tree or additional analysis/monitoring
163	36373	Southern live oak	<i>Quercus virginiana</i>	Curb lifted	B	Tree removal/replacement tree or additional analysis/monitoring
164	10316	Southern live oak	<i>Quercus virginiana</i>	Curb lifted	B	Tree removal/replacement tree or additional analysis/monitoring
165	36374	Southern live oak	<i>Quercus virginiana</i>	Curb lifted	B	Tree removal/replacement tree or additional analysis/monitoring
166	8528	Southern live oak	<i>Quercus virginiana</i>	Curb lifted	B	Tree removal/replacement tree or additional analysis/monitoring
167	8529	Incense cedar	<i>Calocedrus decurrens</i>	Sidewalk lifted	A	Ramp sidewalk above roots

**Table A. Tree Summary and Recommendations**

LSA Tree Number	City's Tree Number	Common Name	Scientific Name	Observation	Group	Recommendation
168	5738	Southern live oak	<i>Quercus virginiana</i>	Curb and driveway approach lifted	B	Tree removal/replacement tree or additional analysis/monitoring
169	10319	Chinese pistache	<i>Pistacia chinensis</i>	No repairs needed	E	N/A
170	10320	Chinese pistache	<i>Pistacia chinensis</i>	No repairs needed	E	N/A
171	22447	Gold medallion tree	<i>Cassia leptophylla</i>	No repairs needed	E	N/A
172	22448	Gold medallion tree	<i>Cassia leptophylla</i>	Sidewalk lifted	E	N/A (offending tree has been replaced)
173	36378	Southern live oak	<i>Quercus virginiana</i>	Curb lifted	B	Tree removal/replacement tree or additional analysis/monitoring
174	38989	Southern live oak	<i>Quercus virginiana</i>	Sidewalk lifted	B	Tree removal/replacement tree or additional analysis/monitoring
175	36379	Southern live oak	<i>Quercus virginiana</i>	Curb and sidewalk lifted	B	Tree removal/replacement tree or additional analysis/monitoring
176	36380	Southern live oak	<i>Quercus virginiana</i>	Curb and sidewalk lifted	B	Tree removal/replacement tree or additional analysis/monitoring
177	10328	Southern live oak	<i>Quercus virginiana</i>	Sidewalk lifted	B	Tree removal/replacement tree or additional analysis/monitoring
178	10329	Southern live oak	<i>Quercus virginiana</i>	Curb and sidewalk lifted	A	Ramp sidewalk above roots
179	22449	Australian willow	<i>Geijera parviflora</i>	No tree present	D	N/A
180	10330	Southern live oak	<i>Quercus virginiana</i>	Curb and sidewalk lifted	B	Tree removal/replacement tree or additional analysis/monitoring
181	8539	Southern live oak	<i>Quercus virginiana</i>	Sidewalk lifted	B	Tree removal/replacement tree or additional analysis/monitoring
182	8540	Southern live oak	<i>Quercus virginiana</i>	Curb lifted	B	Tree removal/replacement tree or additional analysis/monitoring
183	8541	Southern live oak	<i>Quercus virginiana</i>	Curb and sidewalk lifted	B	Tree removal/replacement tree or additional analysis/monitoring
184	8543	Southern live oak	<i>Quercus virginiana</i>	Sidewalk lifted	B	Tree removal/replacement tree or additional analysis/monitoring
185	8544	Southern live oak	<i>Quercus virginiana</i>	Sidewalk lifted	B	Tree removal/replacement tree or additional analysis/monitoring
186	8545	Southern live oak	<i>Quercus virginiana</i>	Sidewalk lifted	B	Tree removal/replacement tree or additional analysis/monitoring

**Table A. Tree Summary and Recommendations**

LSA Tree Number	City's Tree Number	Common Name	Scientific Name	Observation	Group	Recommendation
187	38990	Southern live oak	<i>Quercus virginiana</i>	Sidewalk lifted	B	Tree removal/replacement tree or additional analysis/monitoring
188	38991	Southern live oak	<i>Quercus virginiana</i>	Curb and sidewalk lifted	B	Tree removal/replacement tree or additional analysis/monitoring
189	36382	Southern live oak	<i>Quercus virginiana</i>	Curb and sidewalk lifted	B	Tree removal/replacement tree or additional analysis/monitoring
190	36383	Southern live oak	<i>Quercus virginiana</i>	Sidewalk lifted	A	Ramp sidewalk above roots
191	22450	Chinese fringe tree	<i>Chionanthus retusus</i>	No tree present	D	N/A
192	36384	Southern live oak	<i>Quercus virginiana</i>	No repairs needed	E	N/A
193	10331	Southern live oak	<i>Quercus virginiana</i>	Curb and sidewalk lifted	B	Tree removal/replacement tree or additional analysis/monitoring
194	36387	Southern live oak	<i>Quercus virginiana</i>	Sidewalk lifted	B	Tree removal/replacement tree or additional analysis/monitoring
195	36388	Southern live oak	<i>Quercus virginiana</i>	No repairs needed	E	N/A
196	36389	Southern live oak	<i>Quercus virginiana</i>	No repairs needed	E	N/A
197	22451	Chinese fringe tree	<i>Chionanthus retusus</i>	Sidewalk lifted	B	Tree removal/replacement tree or additional analysis/monitoring
198	22452	Sweetgum	<i>Liquidambar styraciflua</i>	No tree present	D	N/A
199	22453	Sweetgum	<i>Liquidambar styraciflua</i>	No tree present	D	N/A
200	36390	Southern live oak	<i>Quercus virginiana</i>	Tree to be removed for sight	C	N/A
201	none	Southern live oak	<i>Quercus virginiana</i>	No repairs needed	E	N/A
202	none	Coast live oak	<i>Quercus agrifolia</i>	No repairs needed	E	N/A

Compiled by LSA (2026).